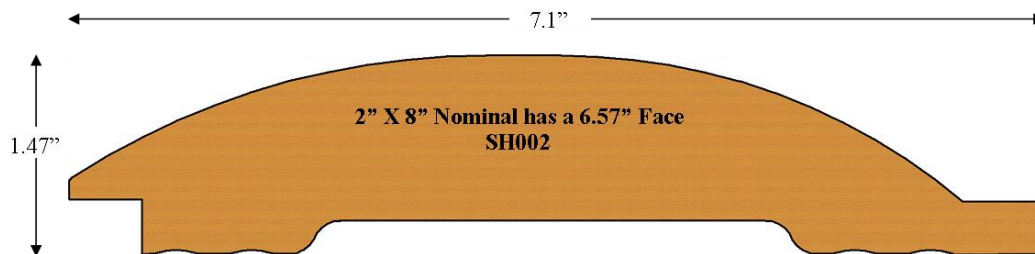


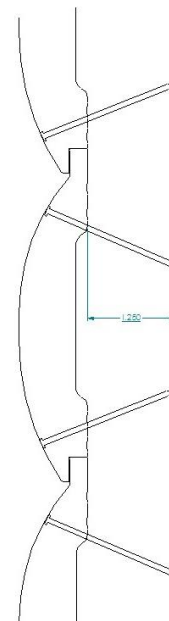
Headwaters Siding Collection

Half Log - Log on Log SH002



Available Specifications

- Species - Alaskan Pine*, White Pine, Cedar*, Redwood*
 - Finish - Prefinish Available - Sikkens Wood Finish Specialist
 - Colors - Log & Siding , SRD, Semi-Transparent, Rubbol Solid, Custom colors also available
 - Edge detail - Shiplap – Face Nailed
 - Surface - Sanded Face
 - Thickness - 2" Nominal
 - Widths - 8" Nominal ([Click for pattern details](#))
 - Grades (specie dependent) - Tight Knot, Select, Clear Vertical Grain
- * Non-resinous - no pitch bleed



Installation Guide

Recommended 1 1/4" penetration of stainless steel siding screw or nail into wood substrate (sheeting and wall studs) behind siding. Horizontal installation, nail into each wall stud. Use 2 1/4" trim screw or 2 1/2" stainless steel nail provided there is no foam board behind siding.

[Click to enlarge](#)

www.kwaterskibros.com

Nation's Largest Selection of Creative Wood Products