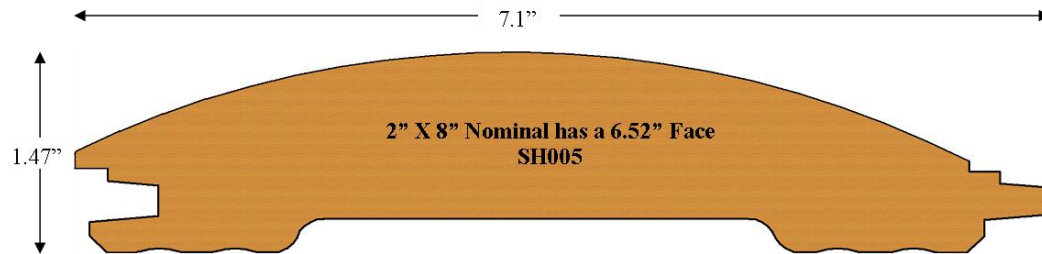


# Headwaters Siding Collection

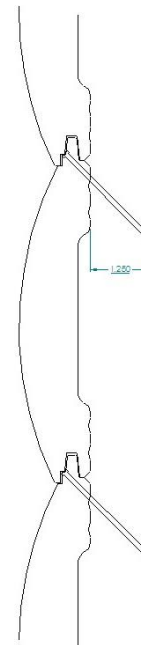
## Half Log T&G - SH005



### Available Specifications

Species -	Alaskan Pine*, White Pine, Cedar*, Redwood*
Finish -	Prefinish Available - Sikkens Wood Finish Specialist
Colors -	<u>Log &amp; Siding</u> , <u>SRD</u> , <u>Semi-Transparent</u> , <u>Rubbol Solid</u> , Custom colors also available
Edge detail -	Double Step Tongue & Groove – Face Nailed
Surface -	Sanded Face
Thickness -	2" Nominal
Widths -	8" Nominal ( <a href="#">Click for pattern details</a> )
Grades (specie dependent) -	Tight Knot, Select, Clear Vertical Grain
	* Non-resinous - no pitch bleed

### Installation Guide



Recommended  $\frac{1}{4}$ " penetration of stainless steel siding screw or nail into wood substrate (sheeting and wall studs) behind siding. Horizontal and diagonal installation, fasten into each wall stud. Vertical installation requires additional blocking every 24" between wall studs. Use  $2\frac{1}{4}$ " trim screw or  $2\frac{1}{2}$ " stainless steel nail provided there is no foam board behind siding. Vertical installation requires additional blocking between studs every 32".

[Click to enlarge](#)

[www.kwaterskibros.com](http://www.kwaterskibros.com)

*Nation's Largest Selection of Creative Wood Products*