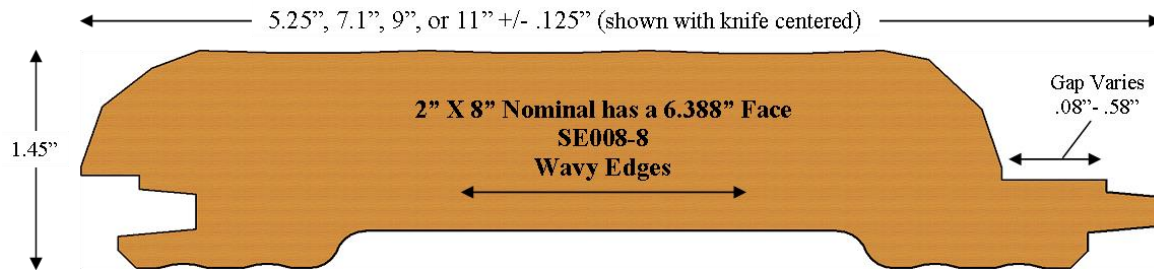


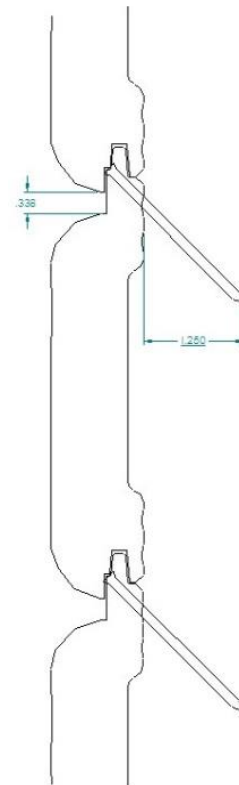
Headwaters Siding Collection

Time Worn Log – SE008



Available Specifications

- Species - Alaskan Pine*, White Pine, Cedar*, Redwood*
- Colors - Log & Siding , SRD , Semi-Transparent , Rubbol Solid , Custom colors also available
- Edge detail - Double Step Tongue & Groove – Hidden Fastener
- Surface - Face and Edges Hewn and Sanded
- Thickness - 2" Nominal
- Widths - 6", 8", 10", 12" Nominal ([Click for pattern details](#))
- Grades (specie dependent) -Tight Knot, Select, Clear Vertical Grain
- * Non-resinous - no pitch bleed



Installation Guide

Recommended $1 \frac{1}{2}$ " penetration of stainless steel siding screw or nail into wood substrate (sheeting and wall studs) behind siding. Horizontal and diagonal installation, nail into each wall stud. Vertical installation requires additional blocking every 24" between wall studs. Use 2 $\frac{1}{4}$ " trim screw or 2 $\frac{1}{2}$ " stainless steel nail provided there is no foam board behind siding.

[Click to enlarge](#)

www.kwaterskibros.com

Nation's Largest Selection of Creative Wood Products