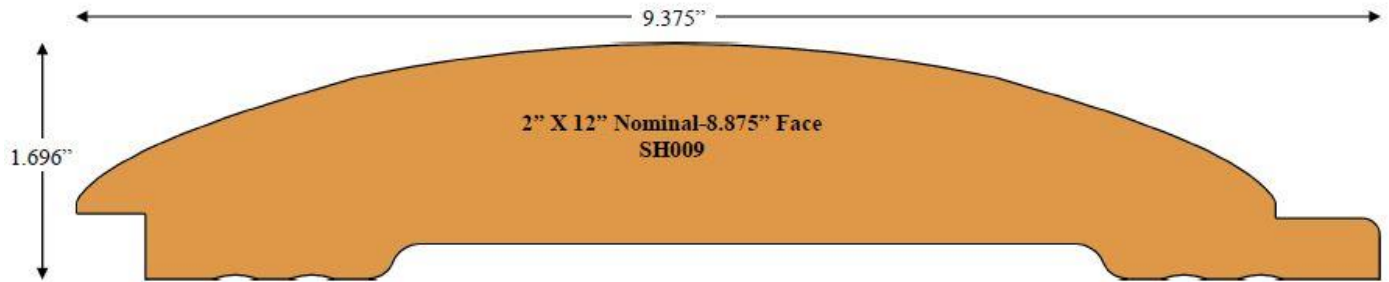


Headwaters Siding Collection

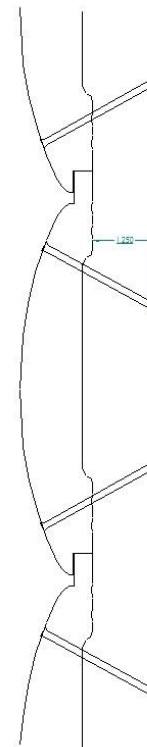
Half Log – Log on Log - SH009



Available Specifications

- Species - Alaskan Pine*, White Pine, Cedar*, Redwood*
- Finish - Prefinish Available - Sikkens Wood Finish Specialist
- Colors - Log & Siding, SRD, Semi-Transparent,
Rubbol Solid, Custom colors also available
- Edge detail - Shiplap – Face Nailed
- Surface - Sanded Face
- Thickness - 2" Nominal
- Widths - 12" Nominal ([Click for pattern details](#))
- Grades (specie dependent) -Tight Knot, Select, Clear Vertical Grain
- * Non-resinous - no pitch bleed

Installation Guide



Recommended $1\frac{1}{4}$ " penetration of stainless steel siding screw or nail into wood substrate (sheeting and wall studs) behind siding. Horizontal installation, nail into each wall stud. Use $2\frac{1}{4}$ " trim screw or $2\frac{1}{2}$ " stainless steel nail provided there is no foam board behind siding.

[Click to enlarge](#)

www.kwaterskibros.com

Nation's Largest Selection of Creative Wood Products