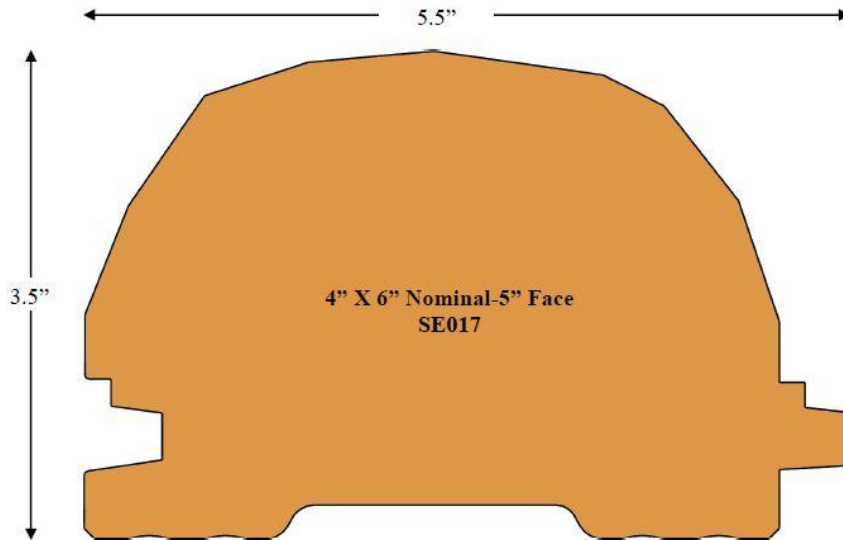


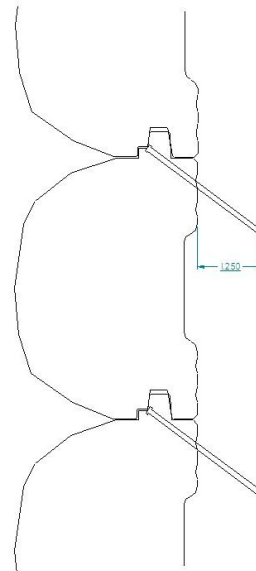
# Hewn Log Siding Collection

## 4x6 Hewn Log – SE017



### Available Specifications

- Species:** White Pine, Cedar\*, or Redwood\*
- Colors -** Log & Siding , SRD , Semi-Transparent ,  
Rubbol Solid , Custom colors also available
- Edge detail -** Double Step Tongue and Groove – Hidden Fastener
- Surface -** Hewn and Sanded Face
- Thickness -** 4" Nominal
- Widths -** 6" Nominal ([Click for pattern details](#))
- Grades (specie dependent) -** Tight Knot, Select, Clear Vertical Grain
- \* Non-resinous - no pitch bleed



### Installation Guide

Recommended  $1\frac{1}{4}$ " penetration of stainless steel siding screw into wood substrate (sheeting and wall studs) behind siding. Horizontal and diagonal installation, nail into each wall stud. Vertical installation requires additional blocking every 24" between wall studs. Use 3" trim screw provided there is no foam board behind siding.

[Click to enlarge](#)

[www.kwaterskibros.com](http://www.kwaterskibros.com)

*Nation's Largest Selection of Creative Wood Products*